



RAVENSBOURNE ROAD, HAWKSLADE, AYLESBURY

OFFERS IN EXCESS OF £350,000

FREEHOLD

A well presented three bedroom end of terrace house located in a popular southside residential area. The property features a spacious living room, modern kitchen/diner, three bedrooms and a family bathroom. Benefits include a private garden, off-road parking, and a garage in a nearby block — ideal for families or first-time buyers.



RAVENSBOURNE ROAD

- WELL PRESENTED THREE BEDROOM HOUSE
- LOCATED IN A POPULAR SOUTHSIDE RESIDENTIAL AREA
- CLOSE TO LOCAL SCHOOLS, AMENITIES AND TRANSPORT LINKS
- GARAGE LOCATED IN A NEARBY BLOCK
- KITCHEN/DINER
- BRIGHT LIVING ROOM
- PRIVATE REAR GARDEN
- IDEAL FOR FAMILIES, FIRST-TIME BUYERS OR INVESTORS
- BUILT IN WARDROBES IN ALL THE BEDROOMS



LOCATION

Situated on the southern outskirts of the town with good access towards London, High Wycombe and the M40. This well-regarded area is situated within walking distance of Stoke Mandeville Hospital and borders open countryside. There are two schools within short walking distance as-well as a community centre and convenience store on the estate.

ACCOMMODATION

This attractive home offers spacious and comfortable living accommodation throughout, beginning with a welcoming entrance hall that leads into a bright and airy living room, featuring a stylish electric fireplace.

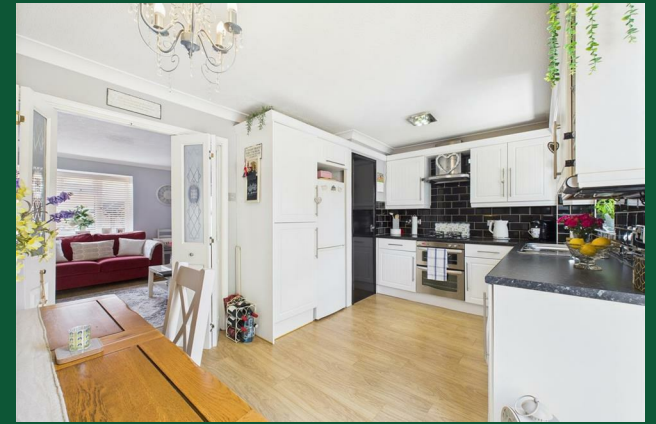
To the rear of the property is a kitchen/diner, fitted with an inset gas hob, oven and cooker hood, along with space for appliances. A useful storage cupboard provides additional practicality, and there's plenty of room for a family dining table.

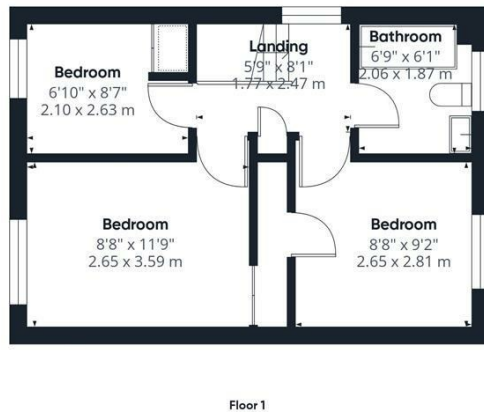
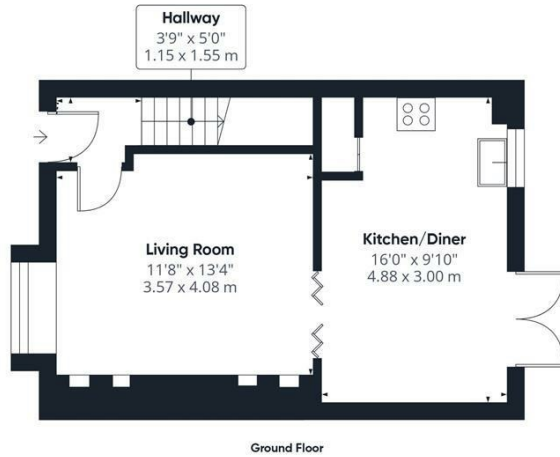
Upstairs, the property comprises three bedrooms, served by a family bathroom.

Outside, the property enjoys a private rear garden with a mix of patio and lawn, complemented by small trees, a garden shed and enclosed fencing.

Additional benefits include off-road parking and a garage located in a nearby block, offering further convenience and storage.

RAVENSBOURNE ROAD





Approximate total area[®]
704 ft²
65.3 m²

(1) Excluding balconies and terraces

Reduced headroom
----- Below 5 ft/1.5 m

Calculations reference the RICS IPMS 3C standard. Measurements are approximate and not to scale. This floor plan is intended for illustration only.

GIRAFFE 360



Energy Efficiency Rating		Current	Potential
Very energy efficient - lower running costs			
(92 plus) A			
(81-91) B			
(69-80) C			
(55-68) D			
(39-54) E			
(21-38) F			
(1-20) G			
Not energy efficient - higher running costs			
England & Wales		EU Directive 2002/91/EC	

Agents Note: Whilst every care has been taken to prepare these particulars, they are for guidance purposes only. All measurements are approximate and are for general guidance purposes only and whilst every care has been taken to ensure their accuracy, they should not be relied upon and potential buyers/tenants are advised to recheck the measurements

George David & Co
46 High Street
Aylesbury
HP20 1SE

01296 393 393
info@georgedavid.co.uk
www.georgedavid.co.uk

